

Anti-Vandal Switches

Also known as vandal-resistant or vandal-proof, our switches are designed to withstand abuse from nature and/or attempts to damage them. Often found in public settings such as parking kiosks, ticket dispensers and elevators, vandal proof switches are also used in industrial and testing equipment.

With sealing degree of IP68, these switches are available in a variety of sizes from 12mm FH & GH Series up to the 40mm DH Series. Also available with UL approval in our AHU and DH22U Series, our IP67 switches offer both ring and dot illumination and non-illuminated options. Choose the EH Series for a rounded convex actuator or the AH, BH, CH or DH Series for a flat actuator. Choices of body and actuator color include stainless steel, nickel and anodized aluminum in black, red, yellow, green or blue. Our versatile vandal resistant switches provide design engineers with several LED color choices. Bi-color choices make endless the combinations and applications. Wall plates and aluminum switch housings are now available with most series choices.



AH Series
19mm
IP67 Sealing Degree
Momentary
Panel Mount

1A@24VDC / 125VAC, 0.5A@250VAC

Ring, Center Dot, Universal Standby & Ring Illumination
Flush, Red Anodized Mushroom & Convex Epoxy Actuator Options
Shine-Through & Laser Etching Actuator Options
Stainless Steel or Anodized Aluminum Finish
Quick Connect or Screw Terminals
Dual LED Options with LED Voltage Options



AHB Series
19mm
IP67 Sealing Degree
Momentary or Latching
Panel Mount

1A@24VDC, 3A@125VAC / 250VAC

Ring, Center Dot, Universal Standby & Ring Illumination
Flush, Convex Epoxy, Shine-Through & Laser Etching Actuator Options
Bezel Options
Stainless Steel or Anodized Aluminum Finish
Quick Connect Termination
Dual LED Options with LED Voltage Options



AHU Series
19mm
IP67 Sealing Degree
Momentary
Panel Mount

3A@125VAC, 3A@250VAC

Center Dot, Ring Illumination or Non-Illuminated Option
Flush Actuator
Stainless Steel or Black Anodized Aluminum Finish
Quick Connect Termination
LED Voltage Options



BH Series
16mm or 19mm
IP67 Sealing Degree
Momentary
Panel Mount

2A@36VDC, 1A@125VAC,
0.5A@250VAC

Ring, Center Dot, Universal Standby & Ring Illumination
Flush, Round, Raised, Convex Epoxy, Shine-Through & Laser Etching
Actuator Options
Bezel Options
Stainless Steel, Gold or Nickel Plated or Anodized Aluminum Finish
Quick Connect or Screw Terminal Termination
Dual LED Options



CH Series
16mm
IP40 or IP67 Sealing Degree
Momentary or Latching
Panel Mount

1A@24VDC, 1A@125VAC,
0.5A@250VAC

Center Dot, Ring Illumination or Non-Illuminated Options
Flush or Raised Actuator Options
Universal Standby Symbol Illuminated Option
Stainless Steel, Nickel Plated or Anodized Aluminum Finish
Quick Connect Termination, Cable Assembly Option
Dual LED Option with LED Voltage Options



DH Series
22mm, 25mm, 28mm & 30mm
IP67 Sealing Degree
Momentary or Latching
Panel Mount

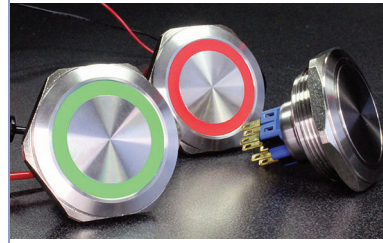
2A@24VDC / 125VAC, 1A@250VAC

Center Dot, Ring Illumination or Non-Illuminated Options
Flush or Raised, Red Anodized Mushroom & Convex Epoxy Actuators
Universal Standby Symbol Illuminated Option
Brushed Stainless Steel or Anodized Aluminum Finish
Quick Connect Termination, Cable Assembly Option
Dual LED Option with LED Voltage Options



DH22U Series
 UL Approved
 22mm
 IP67 Sealing Degree
 Momentary or Latching
 Panel Mount
 3A@125VAC, 3A@250VAC

Ring Illumination or Non-Illuminated Options
 Flush Actuator
 Stainless Steel or Black Anodized Aluminum Finish
 Quick Connect Termination
 LED Color Options with LED Voltage Options



DH40 Series
 40mm
 IP67 Sealing Degree
 Momentary or Latching
 Panel Mount
 2A@24VDC / 125VAC, 1A@250VAC

Ring Illumination or Non-Illuminated Options
 Shine-Through or Laser Etching Actuator Options
 Brushed Stainless Steel or Anodized Aluminum Finish
 Quick Connect Termination, Cable Assembly Option
 Dual LED Option with LED Voltage Options



EH Series
 12mm
 IP67 Sealing Degree
 Momentary
 Panel Mount
 2A@48VDC

Round or Round with Dot Illuminated Actuators
 Stainless Steel, Black, Red, Yellow, Green or Blue Actuators
 Brushed Stainless Steel or Black Anodized Aluminum Finish
 Quick Connect or Screw Terminal Termination
 Dual LED Option with LED Voltage Options



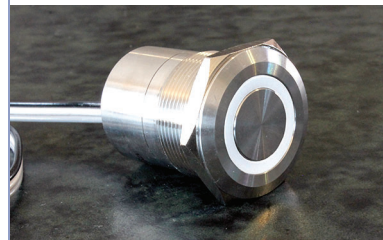
FH Series
 12mm
 IP67 Sealing Degree
 Momentary or Latching
 Panel Mount
 2A@48VDC

Ring or Dot Illumination Options
 Flush or Raised Actuator
 Brushed Stainless Steel or Anodized Aluminum Finish
 Quick Connect Termination
 Dual LED Option with LED Voltage Options



GH Series
 10mm
 IP40 Sealing Degree
 Momentary or Latching
 Panel Mount
 2A@48VDC

Ring Illumination Option
 Flush or Raised Actuator
 Brushed Stainless Steel or Anodized Aluminum Finish
 Quick Connect Termination
 Dual LED Option with LED Voltage Options

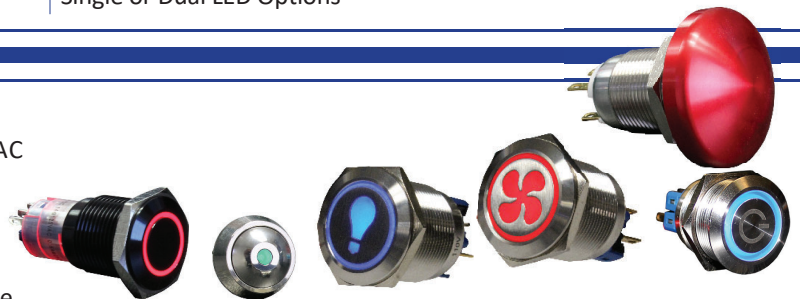


TH Series - Capacitive Touch
 16mm, 19mm, 22mm & 25mm
 IP68 Sealing Degree
 Momentary, Latching or 30-Second Hold
 Panel Mount
 Max Current : 15mA
 Max Voltage : 24VDC

Two Ring Style Illumination Options
 Flush Actuator with Two Bezel Options
 Brushed Stainless Steel
 30cm Wire Length
 Single or Dual LED Options

CIT Relay & Switch manufactures a broad array of electro-mechanical automotive, telecom, security, industrial and HVAC relays and switches.

We thank you for giving CIT Relay & Switch the opportunity to demonstrate why so many are joining our growing list of satisfied customers - customers who have come to rely on the service and quality provided by CIT Relay & Switch.



Find our Anti-Vandal Switches at



763.535.2339 • sales@citrelay.com • www.citrelay.com



www.digikey.com