



# COVID-19 Rapid Capabilities



*for business continuance during this critical time.*

ebm-papst is an innovator and market leader in fans, blowers, and motors with core competencies in motor technology, aerodynamics, and electronics.

ebm-papst Inc. | 100 Hyde Rd. Farmington, CT 06034 | 860-674-1515 | [www.ebmpapst.us](http://www.ebmpapst.us) | [sales@us.ebmpapst.com](mailto:sales@us.ebmpapst.com)

## Essential Manufacturing Business

ebm-papst, Inc. has been deemed an essential manufacturing business due to the products we provide to the critical lifesaving industries of Medical, Air Purification, and HVAC as well as a number of others. We fall under the CISA Homeland Security Critical Manufacturing sector (<https://www.cisa.gov/critical-manufacturing-sector>) and under the state of Connecticut Essential Manufacturer status. We are thankful to be able to support our customers as our country battles this terrible virus.

## Our priorities:

- Preserving the health and safety of our team
- Delivering critical support in the fight against COVID-19
- Supplying our customers with fans & blowers to keep manufacturing strong
- Providing strong customer support during an extraordinary time

## Critically impacted industries we serve:



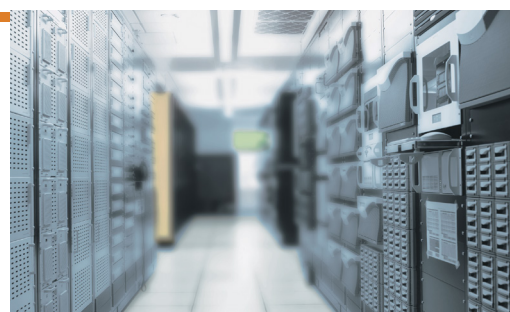
### MEDICAL DEVICES

- Air purifiers
- Ventilators
- Respirators
- Hospital beds



### HVAC/R

- Air Handling Units
- Ventilation
- Air Conditioning
- Refrigeration



### DATA CENTER

- Air Handling Units
- CRACs
- CRAHs
- Server cooling

## The current state of our business:

### Operations are still open

- Manufacturing and shipping
- Laser cutting
- CNC and robotic punch press & press break
- Hydraulic press
- Robotic welding and bending
- Electrostatic paint booth

### R&D / Design Engineering

#### Customer product / prototyping

- Electrical & mechanical engineering
- PCB development, hardware and software design
- CAD development
- Finite element analysis
- Computational Fluid Dynamics (CFD)

#### Lab equipment

- Air performance – AMCA certified lab
- Acoustics
- Combustion
- Temperature

### Workforce

The majority of our staff is working remotely with all of the necessary tools to support our business. We are going above and beyond the current recommended guidelines to ensure the health and safety of our limited onsite team members.